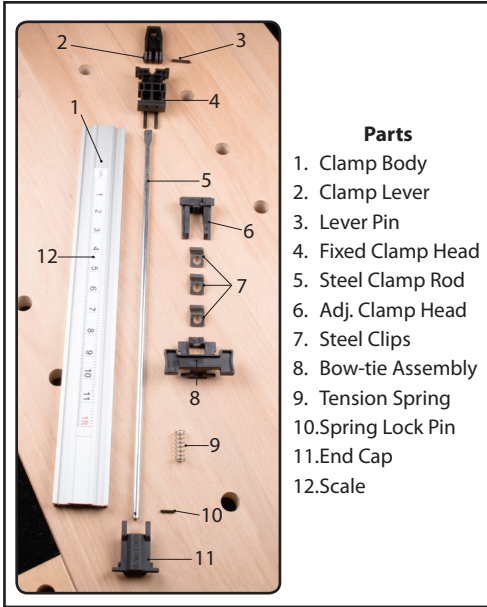


Basic Pro-Grip™ Clamp Maintenance

These Instructions are for basic maintenance and cleaning of your PRO-GRIP™ Straight Edge Clamps.



Step 1



Make sure handle is in the up-right and unlocked position.

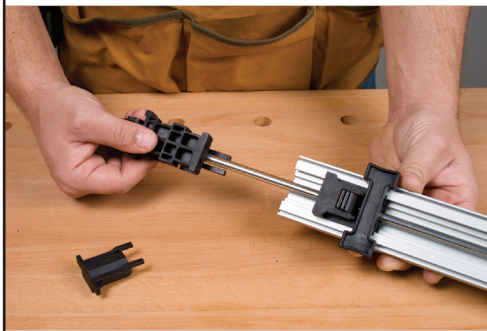
Step 2



While firmly holding clamp, push the end cap out, up and off the clamp body.

Note: end cap is under spring tension.

Step 3



Slide the entire clamping assembly and steel clamp rod from the clamp body.

Step 4



Clean the clamp with a soft cloth and warm soapy water.
(Remove any build up of sawdust and glue)

Step 5



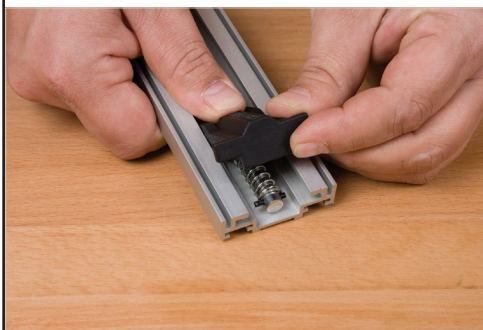
Slide the entire clamping assembly and steel clamp rod back onto the clamp body.

Step 6



Make sure handle is in the up-right and unlocked position.

Step 7



Slide the spring to the end of the clamping rod against the pin. Place the cut out end of the end cap onto rod behind spring.

Step 8



While firmly holding clamp, push the end cap out, down and snap the end cap back into place.

Note: end cap is under spring tension